



HYDRAULIC TRUCK EQUIPMENT QUICK REFERENCE V 3.0

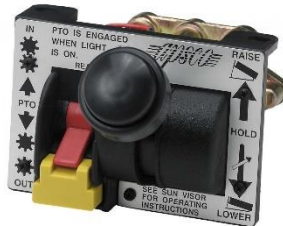




HYD CONTROLS, VALVES & SWITCHES



Hoist ONLY



PTO and Hoist



PTO and Hoist Dual Pressure

FLEET NUMBER	DESCRIPTION
AV-195	HOIST VALVE (Dump raise/lower PTO control already in Cab)

FLEET NUMBER	DESCRIPTION
AV-295	HOIST & PTO VALVE (Controls PTO and Hoist)

FLEET NUMBER	DESCRIPTION
AVC-295-HP-13	P.T.O. On/Off Dump raise/lower optional high pressure switch with light & beeper w/ 13" console



Hoist & Tailgate & Tarp



PTO & Hoist Tailgate & Tarp



PTO & Hoist Tailgate

FLEET NUMBER	DESCRIPTION
AVC-195-TGMT-13	HOIST & TAILGATE & TARP W/ 13" Console

FLEET NUMBER	DESCRIPTION
AVC-295-TGMT-13	PTO HOIST & TAILGATE & TARP W/ 13" Console

FLEET NUMBER	DESCRIPTION
AVC-295-TG8	P.T.O. HOIST & Tailgate 8" Console



8" Console



13" Console



Lift Axle

FLEET NUMBER	DESCRIPTION
3239-8	8" Console only

FLEET NUMBER	DESCRIPTION
3239-13	13" Console Only

FLEET NUMBER	DESCRIPTION
CON-3AE	Lift Axle Panel

BEST SELLER



FLEET NUMBER	DESCRIPTION	REPLACES
V8	4 Way Push Pull Valve 2 Pos. (3) 1/4" Ports	V8 RA030 FS5188

FLEET NUMBER	DESCRIPTION	REPLACES
V88	4 Way Push Pull Valve 2 Pos. (3) 1/4" Ports	V88

FLEET NUMBER	DESCRIPTION	REPLACES
V5	3 Way Push Pull Valve 2 Pos. (2) 1/4" Ports	V5



1 port this side

1 ports this side

2 ports this side



Dump Body
Safety Valve



Tailgate Switch

FLEET NUMBER	DESCRIPTION	REPLACES
V55	3 way Push Pull Valve 2 Pos. (2) 1/4" Ports	V55

FLEET NUMBER	DESCRIPTION	REPLACES
V5-B	Push Pull Valve 2 Pos. (3) 1/4" Ports	V88

FLEET NUMBER	DESCRIPTION
VR-2-ET	Tailgate Electric Rocker Switch



PTO
Air Switch



PTO
Air Switch

FLEET NUMBER	DESCRIPTION
VR-14-EO	ON-OFF Electric Rocker Switch

FLEET NUMBER	DESCRIPTION
VR-9S	PTO Air Rocker Switch

FLEET NUMBER	DESCRIPTION
VTS-1X	Air Toggle Switch



Snow Plows &
Hoists



Roll-Off Control
Winch/Cylinder
Decks



Shown with HSV100
(sold separately)

FLEET NUMBER	DESCRIPTION
VM-12	Single Axis Valve Control Momentary/ Positive Detent/ Positive Detent

FLEET NUMBER	DESCRIPTION
20-UNI-2S-05	2 SPOOL MOTOR VALVE DA

FLEET NUMBER	DESCRIPTION
HSV1C	AIR CYLINDER FOR HSV 100



TRUCK TRAILER
HYDRAULIC
SYSTEMS



TRUCK TRAILER
HYDRAULIC
SYSTEMS



DUMP TRUCKS
WITH PUP

FLEET NUMBER	DESCRIPTION
HFD100	PRIORITY FLOW DIVIDER VALVE 1" NPTF 30GPM 3000PSI

FLEET NUMBER	DESCRIPTION
HFDL075SAE	SIDE PORTED PRIORITY FLOW DIVIDER 3/4" SAE ORB 30 GPM 3000 PSI

FLEET NUMBER	DESCRIPTION
HSV100	2 POSITION SELECTOR VALVE 1" NPTF 30 GPM 3000 PSI



HYD TANK REPLACEMENT PARTS



FLEET NUMBER	DESCRIPTION
TFA005715	CHROME FILLER-STRAINER BREATHER CAP ASSEMBLY

FLEET NUMBER	DESCRIPTION
TFAN3C	POLYMER FILLER-STRAINER BREATHER CAP ASSEMBLY

FLEET NUMBER	DESCRIPTION
LDR02A	OIL LEVEL GAUGE WITH TEMP INDICATOR

FLEET NUMBER	DESCRIPTION
LDR04	OIL LEVEL GAUGE WITH TEMP INDICATOR

CONTROL TOWER REPLACEMENT PARTS



FLEET NUMBER	DESCRIPTION
EL799-12	LED Indicator Light

FLEET NUMBER	DESCRIPTION
4559	Wire Harness for VR 9S

MISC RELATED KITS



DUMP BODY VIBRATOR KITS

FLEET NUMBER	DESCRIPTION
SK-4814	Seal Kit for C3805-DM

FLEET NUMBER	DESCRIPTION
EC-PTO	Electric PTO Conversion Kit

FLEET NUMBER	DESCRIPTION
DBV2500	DUMP BODY VIBRATOR 2500LB
DBV3500	DUMP BODY VIBRATOR 3500LB



DUMP PUMPS & ACTUATORS

BEST SELLER



DUMP PUMP
MANUAL TRANSMISSION

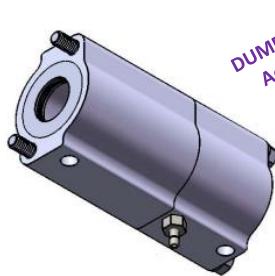
BEST SELLER



DUMP PUMP
AUTOMATIC TRANSMISSION

FLEET NUMBER	DESCRIPTION	FITS
PTBZ102LAS25	DUMP PUMP 27 GPM	C102
PTBZG102LAS20	DUMP PUMP 20 GPM	G102

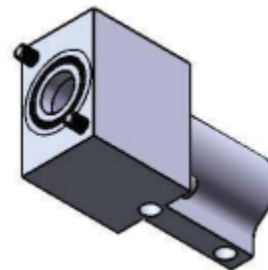
FLEET NUMBER	DESCRIPTION	FITS
PTBZG102RAS20	DIRECT MOUNT, RIGHT HAND, AIR	G102



DUMP PUMP
Actuator



METERING



DUMP PUMP
Actuator

NON-METERING

FLEET NUMBER	DESCRIPTION	FITS
C3805-DM	Air Actuator for C101/102 DUMP Pumps	Parker C101/102 Muncie E/EXL Permco DM640/ DMD 25

FLEET NUMBER	DESCRIPTION	FITS
C3508-DM	Air Actuator for G101/102 DUMP Pumps	Parker V20 Price 20



NON-METERING



NON-METERING

FLEET NUMBER	DESCRIPTION	FITS
C3526-DM	Air Actuator for 20 Series Hydraulic Valves	Parker V20 Price 20

FLEET NUMBER	DESCRIPTION	FITS
C3542-DM	Air Actuator for 42 Series Hydraulic Valves	Parker V42 Price 20



METERING

BEST SELLER



DUMP PUMP
BRACKET

FLEET NUMBER	DESCRIPTION	FITS
C3835-DM	Air Actuator for 35 Series Hydraulic Valves	Parker A35

FLEET NUMBER	DESCRIPTION	FITS
PB10	PUMP SUPPORT BRACKET KIT	DUMP PUMPS



HYDRAULIC TANKS



FLEET NUMBER	DESCRIPTION
UR50S	50 GALLON UPRIGHT STEEL RESERVOIR 25.5"H x 14.75"W x 34"D



FLEET NUMBER	DESCRIPTION
UR70S	70 GALLON UPRIGHT STEEL RESERVOIR 25.5"H x 14.75"W x 49.25"D



FLEET NUMBER	DESCRIPTION
UR50A	50 GALLON UPRIGHT ALUMINUM RESERVOIR 25.5"H x 14.75"W x 34"D



FLEET NUMBER	DESCRIPTION
UR70A	70 GALLON UPRIGHT STEEL RESERVOIR 25.5"H x 14.75"W x 49.25"D



FLEET NUMBER	DESCRIPTION
SMC35A	35 GAL SIDE MOUNT CYLINDRICAL ALUMINUM
SMC50A	50 GAL SIDE MOUNT CYLINDRICAL ALUMINUM
SMC70A	70 GAL SIDE MOUNT CYLINDRICAL ALUMINUM



DUAL REAR 2" NPT
SUCTION/RETURN
PORTS

FLEET NUMBER	DESCRIPTION
SMC25AR	25 GAL SIDE MOUNT ALUMINUM WITH REAR PORTS
SMC30AR	30 GAL SIDE MOUNT ALUMINUM WITH REAR PORTS
SMC50AR	50 GAL SIDE MOUNT ALUMINUM WITH REAR PORTS
SMC70AR	70 GAL SIDE MOUNT ALUMINUM WITH REAR PORTS



TAILGATE CYLINDERS



FLEET NUMBER	DESCRIPTION
C-5070-PK	TAILGATE CYLINDER 2.5" BORE X 8" STROKE



FLEET NUMBER	DESCRIPTION
C-6009-PK	TAILGATE CYLINDER 3.5" BORE X 8" STROKE



FLEET NUMBER	DESCRIPTION
C-6089-PK	TAILGATE CYLINDER 3.5" BORE X 8" STROKE



FLEET NUMBER	DESCRIPTION
C-7421-PK	TAILGATE CYLINDER 4" BORE X 20" STROKE



FLEET NUMBER	DESCRIPTION
C-7404-PK	TAILGATE CYLINDER 4" BORE X 24" STROKE



DUMP CYLINDERS

Cylinder features:

- Single or double acting telescopic cylinders
- ARCOR^{MH} salt bath nitriding
- Improved corrosion and wear resistance
- Many stroke lengths available
- Operate with a lower volume of oil resulting in faster cycle times
- Lightweight design
- G2 series: pin to pin mount
- G3 series: trunnion mount with cover
- Simplified design (50% less components)
- 4-year warranty



CALL YOUR *FLEET BRAKE* REPRESENTATIVE

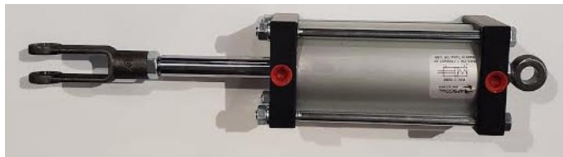
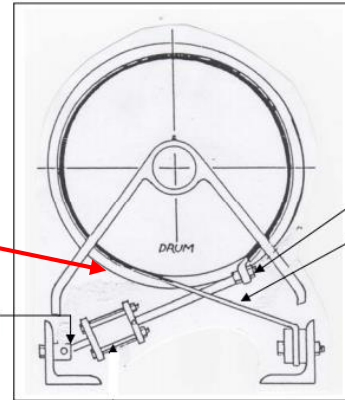
WITH THE SERIAL NUMBER ON THE CYLINDER OR FOR FURTHER ASSISTANCE



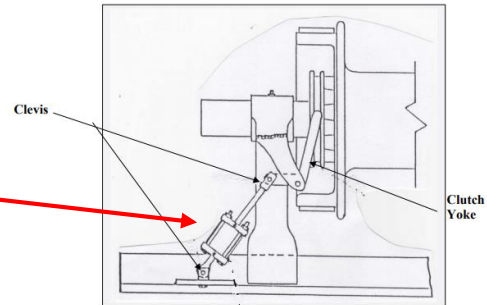
WINCH PARTS



FLEET NUMBER	DESCRIPTION
C-5039	Tulsa Winch BRAKE Band Cylinder

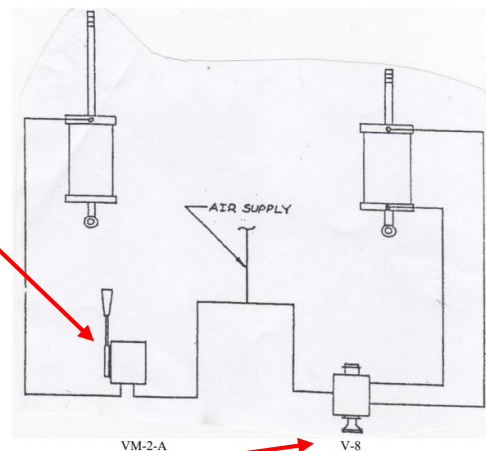


FLEET NUMBER	DESCRIPTION
C-5280	Tulsa Winch CLUTCH Cylinder



FLEET NUMBER	DESCRIPTION
VM-2-X	Winch Metering Brake Band Valve

WT-64-M Control Kit
System Diagram



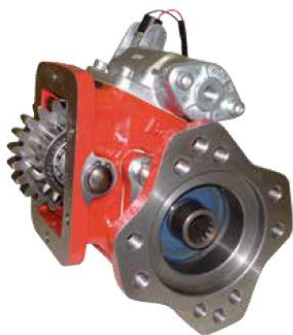
FLEET NUMBER	DESCRIPTION	REPLACES
V8	4 Way Push Pull Valve 2 Pos. (3) 1/4" Ports	V8 RA030 FS5188



PTOS

2000 SERIES

*PLEASE CONTACT FLEET
BRAKE TO CONFIRM EXACT
PTO SPEED RATIOS*



COMPATIBLE WITH THE MOST COMMON
TRANSMISSIONS IN THE MARKET.
(FULLER MANUAL TRANSMISSIONS)

BEST SELLER

PART#	DESCRIPTION
PT2000XCN013RA	Fuller with Direct Mount Flange, Left Forward, bottom mount 8-Bolt, Air Shift, "B" Pump Mount – C Ratio 1:0.73
PT2000XBN011RA	Fuller with Direct Mount Flange, bottom mount 8-bolt, Air Shift, "B" Pump Mount – B Ratio 1:0.55
PT2000XBN013RA	Fuller with Direct Mount Flange, Left Forward, bottom mount 8-Bolt, Air Shift, "B" Pump Mount – B Ratio 1:0.55
PT2000XCN011RA	Fuller with Direct Mount Flange, bottom mount 8-Bolt, Air Shift, "B" Pump Mount – C Ratio 1:0.73
PT2000XEN011RA	Fuller with Direct Mount Flange, bottom mount 8-Bolt, Air Shift, "B" Pump Mount – E Ratio 1:0.8
PT2000XJN011RA	Fuller with Direct Mount Flange, bottom mount 8-Bolt, Air Shift, "B" Pump Mount – J Ratio 1:0.95

BEST SELLER

BEST SELLER



PT11106K03

Mack mDRIVE
& Volvo I-Shift



PT1198K03

PART#	DESCRIPTION
PT11106K03	Heavy Duty Power Take-off two gears, constant mesh internal ratio 1: 1,62 mounting on rear 4 bolts-window of the Gearbox. Pneumatic shifting, to connect Iso 4 bolts pumps. switch.
PT1198K03	Base PTO + flange Kit (without shaft) constant mesh 1:1.30 mounting on rear 4 bolts-window of the Gearbox. Pneumatic shifting, output Iso 4 bolts. Optional: Passing contact switch and adapter shaft.



3252 SERIES



**FITS ALLISON
AUTOMATIC
TRANSMISSIONS**

PART#	DESCRIPTION
PT3252PEE633SA	Allison 10-Bolt with Direct Mount Flange, Hot Shift Electric/ Low Profile

4100 SERIES



**HEAVY DUTY HIGH TORQUE
SAE 8 HOLE**

**BLOWER APPLICATIONS,
LOG LOADERS & MORE**

PART#	DESCRIPTION
PT4100.....	Call Fleet Brake for Mount and Transmission Settings

6800 SERIES



**HEAVY DUTY
REVERSABLE PTO**

**WATER AND PUMP
TRUCKS**

PART#	DESCRIPTION
PT6800XBN011SE	8 BOLT REVERSIBLE B RATIO



8500 SERIES



SUPER HEAVY DUTY PTO

FOR MAXIMUM TORQUE &
HORSEPOWER APPLICATIONS

FITS OILPATCH / VAC TRUCKS

PART#	DESCRIPTION
PT8500.....	Call Fleet Brake for Mount and Transmission Settings

BLOWERS, PUMPS & COOLERS

BEST SELLER



TRUCK
BLOWER

FLEET NUMBER	DESCRIPTION
601-000	BLOWER, P857 W/OIL, MTG BOL



HYD OIL
COOLER

FLEET NUMBER	DESCRIPTION
HE300N1X	HE HIGH FLOW COOLER, 3000 PSI



HYD OIL
COOLER

FLEET NUMBER	DESCRIPTION
HF300T2X	HYDRAFLOW, 30 GPM, 3000 PSI



LIQUID BULK
TRANSFER
ALL IN ONE

FLEET NUMBER	DESCRIPTION
HC SERIES	HYDRACHEM COOLER/PUMP/ RESEVOIR COMBINATION



HD HYD OIL
COOLER

FLEET NUMBER	DESCRIPTION
HD300T2X	HYDRAFLOW, HD 3000 PSI, 50 G



BEST SELLER

FLUID PUMP

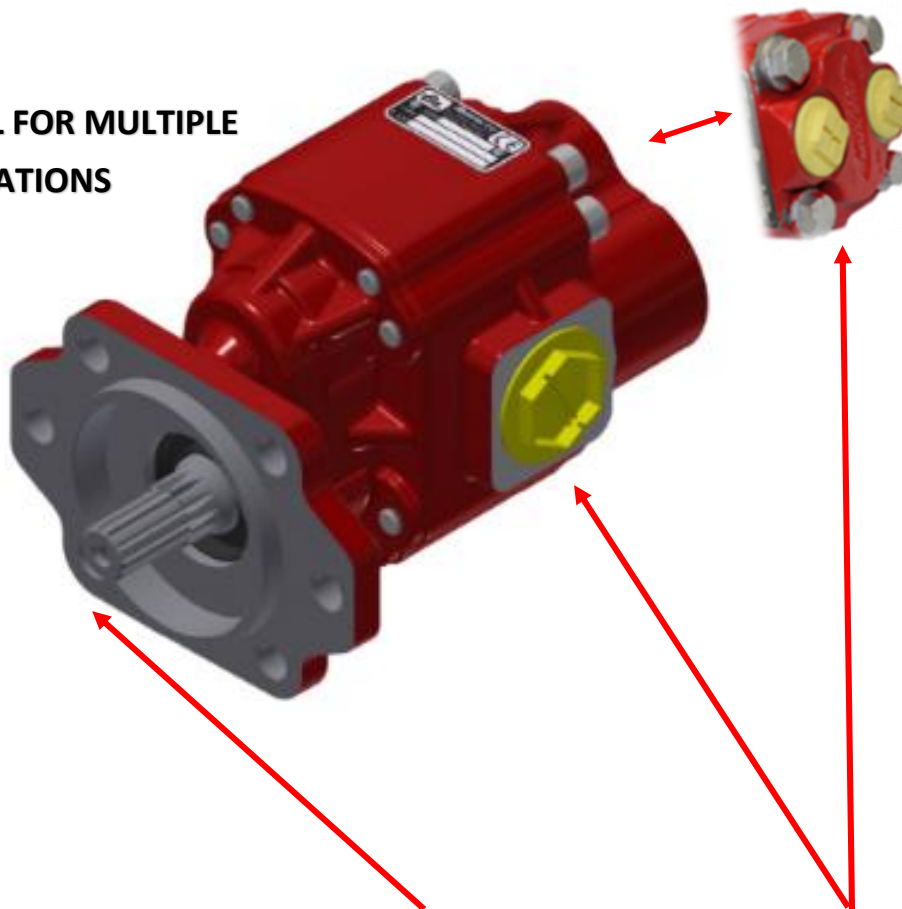
FLEET NUMBER	DESCRIPTION
110WNT	PUMP 4" IN/OUT STRAIGHT THRU



HYDRAULIC GEAR PUMPS

BI-ROTATIONAL FOR MULTIPLE APPLICATIONS

2 – 4 Bolt
Multi Mount
Flange



PART#	DESCRIPTION	OUTPUT FLANGE & SHAFT	FLOW	PORTS
PTBELA 13N14	BI-ROTATIONAL Gear Pump	SAE B 13 TOOTH	13 GPM	NPT 1.25"
PTBELA 16N14	BI-ROTATIONAL Gear Pump	SAE B 13 TOOTH	16 GPM	NPT 1.25"
BEST SELLER PTBELA 19N14	BI-ROTATIONAL Gear Pump	SAE B 13 TOOTH	19 GPM	NPT 1.25"
PTBELA 26N12	BI-ROTATIONAL Gear Pump	SAE B 13 TOOTH	26 GPM	NPT 1.5"
PTBELB 19N14	BI-ROTATIONAL Gear Pump	SAE BB 15 TOOTH	19 GPM	NPT 1.25"
PTBELB 26S20	BI-ROTATIONAL Gear Pump	SAE BB 15 TOOTH	26 GPM	SAE 20
PTBELD 26S20	BI-ROTATIONAL Gear Pump	DIN 5462 8 TOOTH	26 GPM	SAE 20

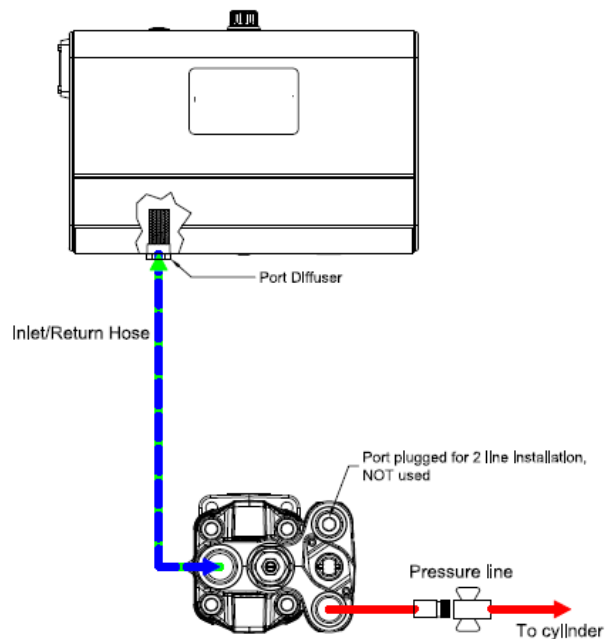
MANY OTHER PUMPS AVAILABLE!!

CONTACT YOUR FLEET BRAKE REPRESENTATIVE FOR MORE INFORMATION



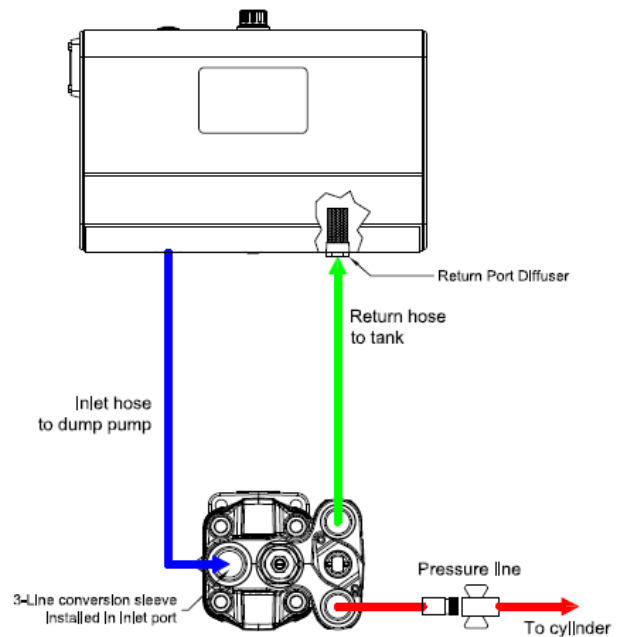
PLUMBING DIAGRAMS

Dump Pump 2-Line Plumbing Diagram

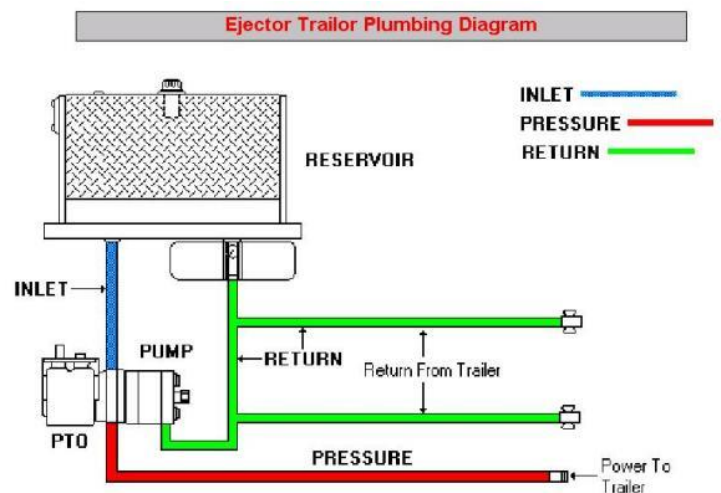
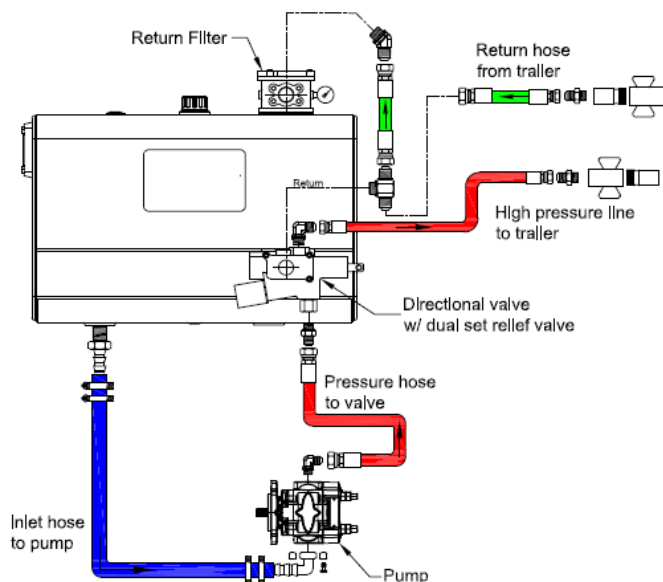


Dump Pump 3-Line Plumbing Diagram

✓ **RECOMMENDED**



Combo Kit II Plumbing Diagram



**FLEET
BRAKE**

Locations

www.FleetBrake.com

CALGARY, AB	 	7707 54 Street SE, T2C 4R7	(403) 279-8661
CALGARY, AB	  	5654 55 Street SE, T2C 3G9	(403) 724-0061
EDMONTON, AB	  	3904 - 78 Ave. NW, T6B 2W4	(780) 468-1471
EDMONTON, AB	  	18410 - 118A Avenue, T5S 2M3	(780) 453-8706
WINNIPEG, MB	 	1650 Oak Point Hwy, R3C 2E6	(204) 694-1013
WINNIPEG, MB	  	540 Oak Point Hwy, R3C 2E6	(204) 632-5184
LETHBRIDGE, AB	  	4005 9 Avenue North, T1H 6H6	(403) 327-2626
RED DEER, AB	  	158 Queens Drive, T4P 0R4	(403) 343-8771
PENTICTON, BC		101, 1219 Commercial Way, V2A 3H4	(250) 493-8847
GRAND PRAIRIE, AB	  	8401 - 99 St., Claumont, T0H 0W0	(780) 567-4407
MISSISSAUGA, ON		2200 Drew Rd., Mississauga, L5S 1B1	(905) 670-2784
ST. LAURENT, QC		1180 Montee de Liesse, H4S 1J4	(514) 331-6662
KAMLOOPS, BC	 	575 Athabasca Street, V2H 1C5	(250) 314-0019
DARTMOUTH, NS		81 Wright Ave., Unit A, B3B 1H4	(902) 468-1396



Service



Parts



Equipment

Email: info@fleetbrake.com**HDA**
TRUCK PRIDE.*Wherever the road takes you...We're there.*